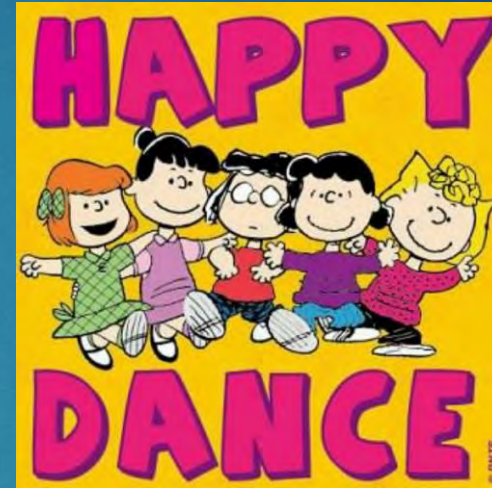


Sacramento
County
Home Visiting
Coordinating
Collaborative
(HVCC)

Thursday, April 14, 2022



Please type in the chat:

- Name
- Organization
- What song gets you motivated or dancing?

Vision Statement

To improve the physical and emotional well-being of prenatal and parenting families through a coordinated system of care, with a focus on high quality home visiting that is easily accessible, equitable, culturally responsive and best meets the needs of those being served.

AGENDA

Welcome

Recap/Update

MOU

CSUS Auditory Program

Decision Tree Training Video

Website Update

Community Voice

Training Share

Home Visiting Workforce Study

Community Support Team

Announcements

Timeline

Next Meeting

Home Visiting Coordinating Collaborative (HVCC)

RECAP

- ▶ Reviewed MOU Status
- ▶ Implementation of the Decision Tree
- ▶ SacFamilyHelp Branding Input
- ▶ Be Mom Aware Presentation
- ▶ Shared multiple trainings!
- ▶ F5CA Workforce Study Report

UPDATES

- ▶ MOU out for signature!
- ▶ SacFamilyConnect Branding- **We got a logo!**
- ▶ Trainings

Memorandum of Understanding

32 Agencies

5 Strategies

1

Building Cross-Agency Relationships

2

Streamlined and Closed-loop Referrals

3

Community Voice

4

Training

5

Data Sharing

Resource Share



Maryjane Rees Language, Speech, and Hearing Center - Audiology Clinic

916-278-4697

Audiology-clinic@csus.edu

Redefine the Possible™

About the Clinic

- Audiologic services to the community
- Training site for Doctor of Audiology (Au.D.) students
 - Supervised by licensed audiologists
- Monday-Friday, 8-5am
 - Appointment times may be different



About the Clinic

- Donations-only clinic
 - No fees
 - No billing insurance, Medicare, or Medi-Cal

Current Services

- Comprehensive hearing evaluations for children and adults (ages 1+)
- Hearing aid services
- Tinnitus evaluation and management
- Central auditory processing evaluations
- Earmold impression and hearing protection services:
 - Custom sleep plugs
 - Hazardous noise protection
 - Musician's plugs
 - Musician's in-ear monitors
- Employee hearing testing for occupational health



Hearing Aid Project

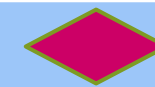
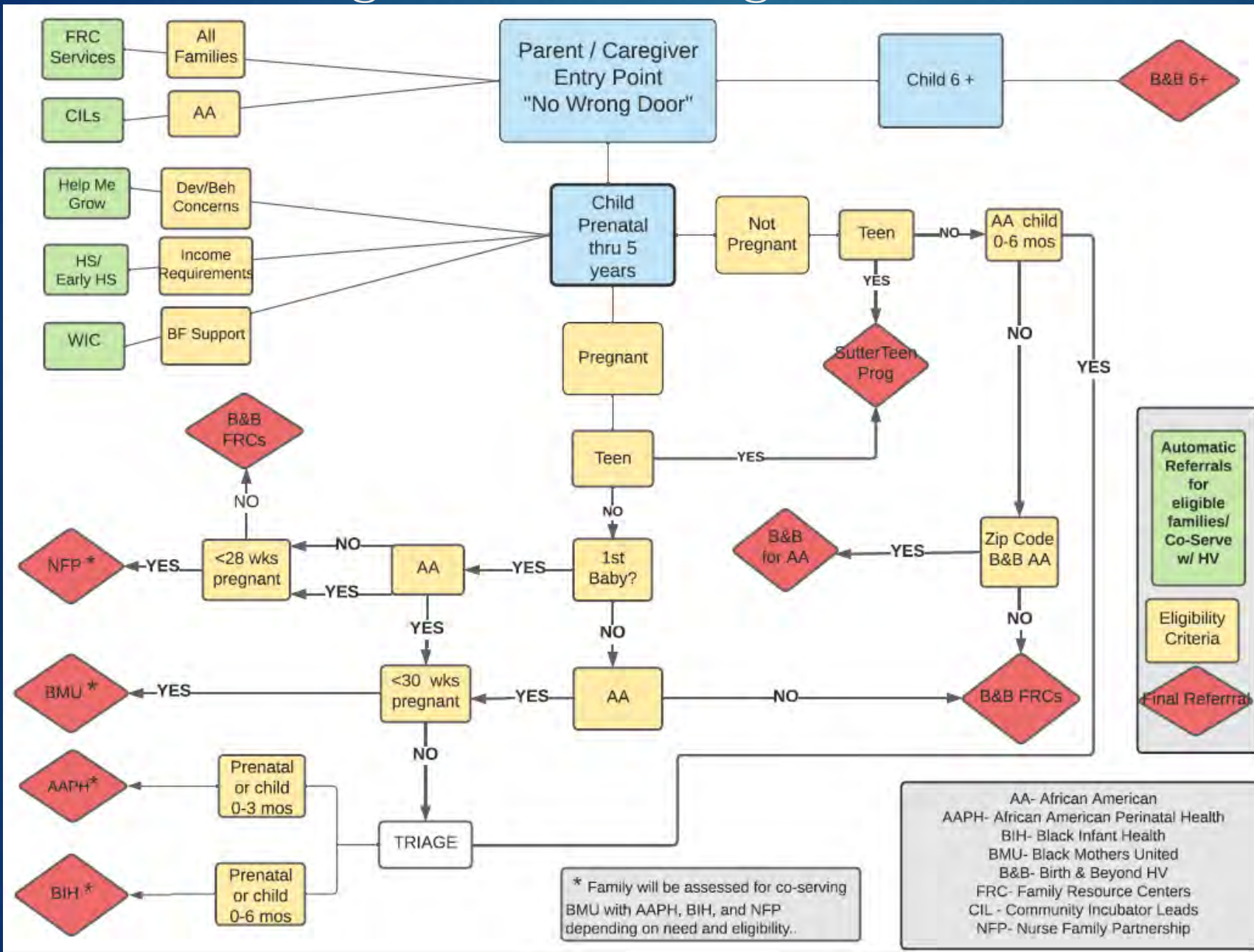
- Collection site for The Hearing Aid Project
 - Donations accepted
 - Refurbished and provided to eligible recipients

Contact Information



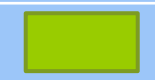
- Folsom Hall Suite 1000
7667 Folsom Boulevard,
Sacramento, CA 95826
- (916) 278-4697
- [audiology-
clinic@csus.edu](mailto:audiology-clinic@csus.edu)
 - Hilarie McNeil, ASA II, for
scheduling questions

Home Visiting Referrals Program Decision Tree



PROGRAMS

- [Sutter Teen Program](#)
916-887-4031
- [Nurse Family Partnership \(NFP\)](#)
916-875-0900
- [Black Mothers United \(BMU\)](#)
916-558-4809
- [African American Perinatal Health Program \(AAPH\)](#)
916-875-2229
- [Black Infant Health \(BIH\)](#)
916-875-2229
- [B&B BCLC- Arden/Arcade](#)
916-514-8096
- [B&B BCLC- Valley Hi/ Meadowview](#)
916-394-6300



PROGRAMS

- [Head Start/ Early Head Start](#)
916-263-3804
 - [Help Me Grow](#)
916-822-8744
 - [WIC Lactation Services](#)
916-876-5000/916-326-5841
- For a CIL location:
www.blackchildlegacy.org

For a B&B FRC Location
www.birth-beyondfrc.com

Additional Family Resources



www.SacFamilyConnect.com

We have a logo!



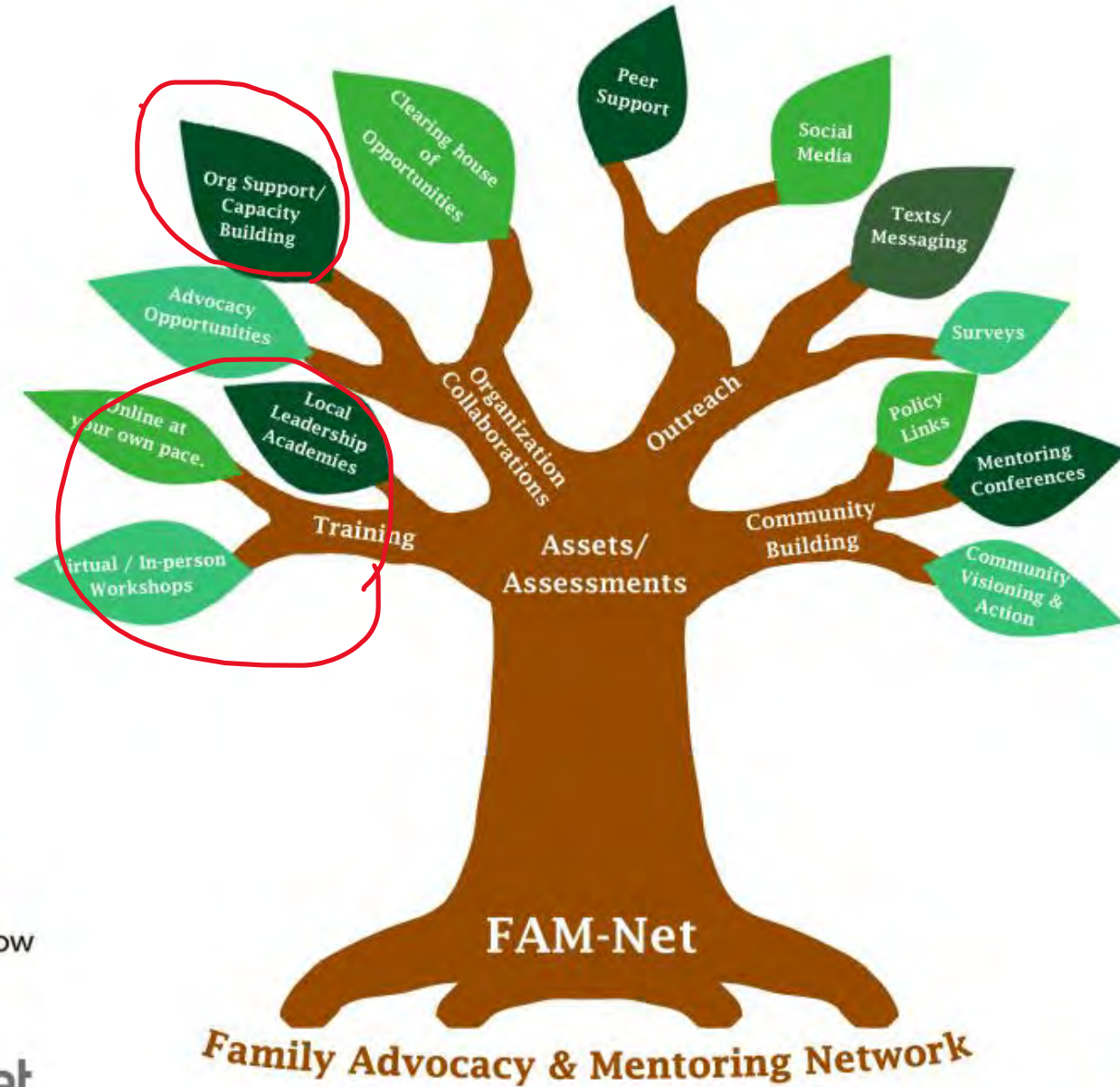
**SAC
FAMILY
CONNECT**

Now we need a tagline...

COMMUNITY VOICE

Parent Leadership Workgroup Action Plan

Family Advocacy Mentoring Network



Building Organizational Capacity for Community Voice

- ▶ *How can an active Parent Advisory Committee enhance a Program's work with families?*
- ▶ *What steps are needed to create and sustain an effective Parent Advisory Committee?*
- ▶ *Why should Programs share decision-making with Program participants?*

Offered monthly
(2 half days)

Scholarships
for
Managers



**Developing and Sustaining
Effective Parent Advisory
Committees Training**



NATIONAL
Family Support
NETWORK

TRAINING

- ▶ ACEs/Trauma & Resilience
 - ▶ HOPE Overview
 - ▶ HOPE Workshops
- ▶ Working with special populations
 - ▶ Refugees
 - ▶ REDA Training in November
 - ▶ Cultural norms for Afghan families
- ▶ Support for Supervisors
- ▶ Racial Equity Diversity and Inclusion (REDI)
- ▶ **Home Visitor Mental Health (Wellness & Self Care)**
- ▶ Professional Development for Home Visitors
- ▶ National Home Visiting Summit 2022
- ▶ Parent Leadership



First 5 California Workforce Study Findings HIGHLIGHTS



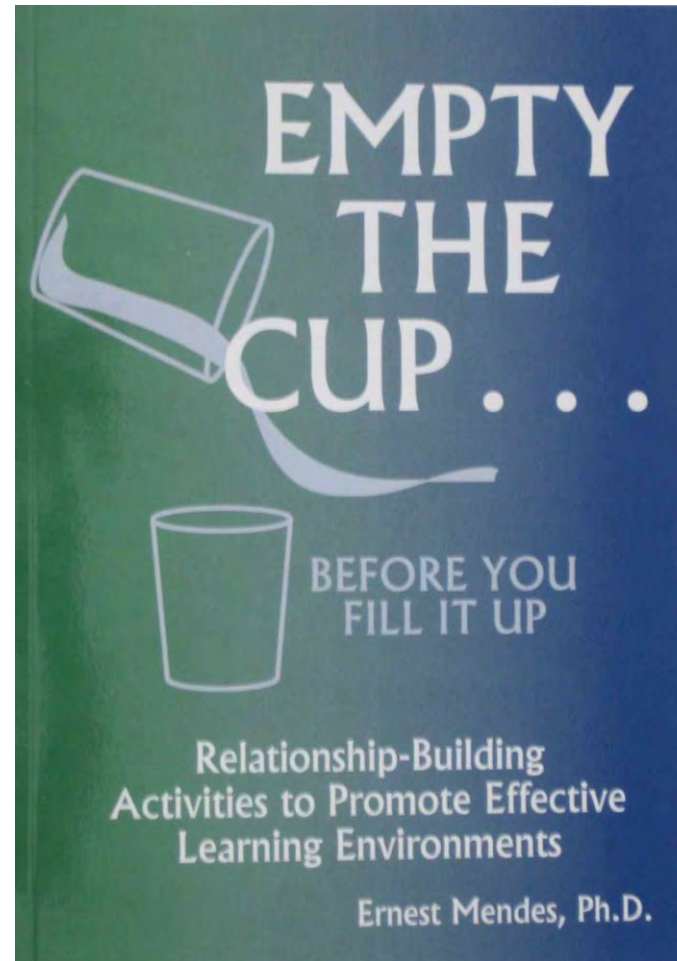
- ▶ Most home visitors are new to the field
- ▶ The well-being of the home visiting workforce is concern, with one quarter reporting to have depressive symptoms (increase from recent national studies).
- ▶ Since COVID, the home visiting workforce is working almost twice as much as before.
- ▶ About half of the respondents would like additional mental health supports.
- ▶ Reporting more depressive symptoms and experiencing discrimination in the workplace decreased the likelihood of remaining in their current position.

For full report see:
www.Childtrends.org

ERNIE MENDES, PhD
“Being Our Best Self”
Social & Emotional
Resilience

▶ Tuesday, April 26, 2022

▶ 9:30AM-12:30PM



Registration
Required

SHAYLA COLLINS

Self-Compassion/
Mindfulness

- ▶ Friday, June 10, 2022
- ▶ 10:00-11:00AM



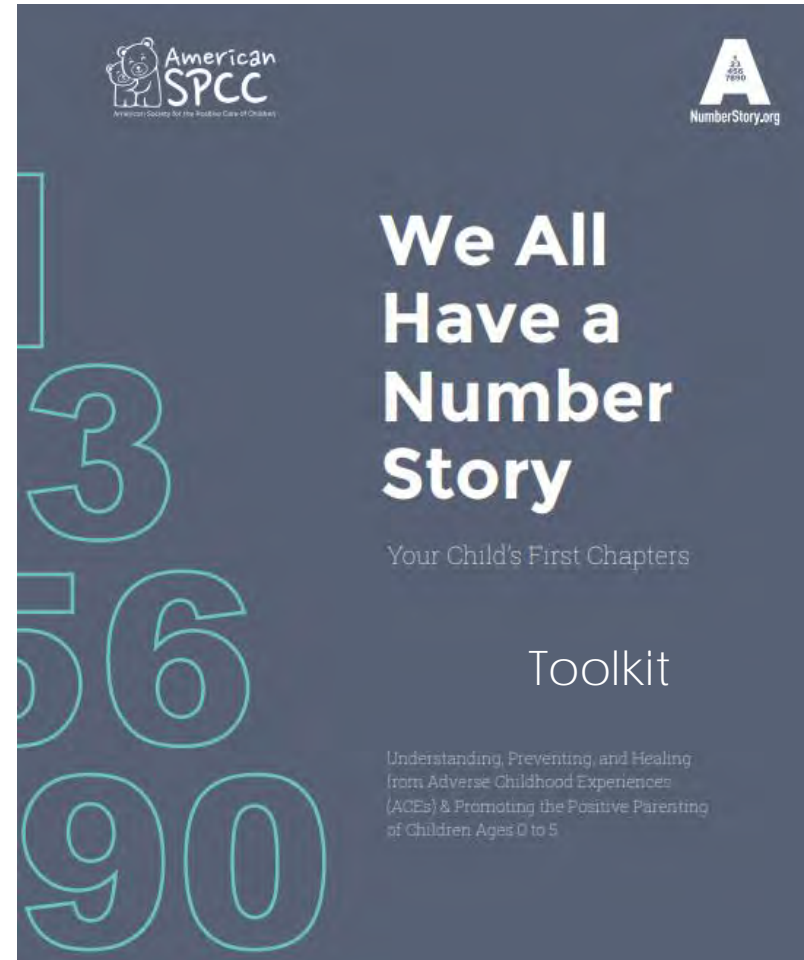
WEBINAR:

Understanding ACEs for
**Parents &
Caregivers**

Thursday, April 21, 2022

12:00-1:00PM

www.americanspcc.org



Resource Presentation

Randall Freitas,
Mental Health Program Coordinator

Sacramento County
Behavioral Health Services



COMMUNITY SUPPORT TEAM



Referral Line: 874-6015



Learn about the
Healthy Beginnings Program on
Thursday May 19th at
First 5's Quarterly Contractors Meeting

LORI MILLER, LCSW | Division Manager
Substance Use Prevention & Treatment
Department of Health Services
Sacramento County

WHERE ARE WE IN OUR ACTION PLAN?



Workgroups

- ▶ Executive Committee (Funders)
- ▶ Action Plan
- ▶ Cross-Agency Relationships (i.e. “Meet & Greet” Planning)
- ▶ Community Voice (i.e. Parent Leadership Training Planning)
- ▶ Website Development
- ▶ Referrals
- ▶ Training (i.e. Home Visiting Summit 2022 Planning)



Contact Alejandra if interested in joining a workgroup

2022 Meetings

April 14
June 9
August 11
October 13
December 8

Thursdays
2:00-3:30PM

Questions?

Alejandra Labrado
labradoa@saccounty.gov

