



Please type in the chat:

- Name
- Organization
- When you were young, what did you want to be when you grew up?



# VISION STATEMENT

*To improve the physical and emotional well-being of prenatal and parenting families through a coordinated system of care, with a focus on high quality home visiting that is easily accessible, equitable, culturally responsive and best meets the needs of those being served.*

# AGENDA

---

**Welcome**

---

**Recap/Update**

---

**Important Changes**

---

**Decision Tree Training Video**

---

**Poll- How you're providing services?**

---

**Sac Family Connect Outreach**

---

**Community Voice & PLTI Discussion**

---

**Poll- Challenges**

---

**Discussion- Program Improvement**

---

**Wellness**

---

**Where we are now**

---

**Announcements**

---

**Next Meeting**

# HOME VISITING COORDINATING COLLABORATIVE (HVCC)

## RECAP

Reviewed MOU Status

Implementation of the Decision Tree

Shared Sac Family Connect Logo

Learned of multiple resources  
F5CA Workforce  
Study Report

## UPDATES

**MOU FINALIZED !**

Sac Family Connect Framework

Dr. Ernie Mendes Training

Referral Training Video Status

Refugee Family Support Application

# MEMORANDUM OF UNDERSTANDING

## 32 AGENCIES

## 5 STRATEGIES

1

Stronger  
Cross-Agency  
Relationships

2

Streamlined  
and Closed-  
loop Referrals

3

Community  
Voice

4

Training

5

Data Sharing

# A FEW IMPORTANT CHANGES



## MEETING TIME

QUARTERLY

2<sup>nd</sup> Thursday, 2<sup>nd</sup> month  
of each quarter  
9:30-11:30

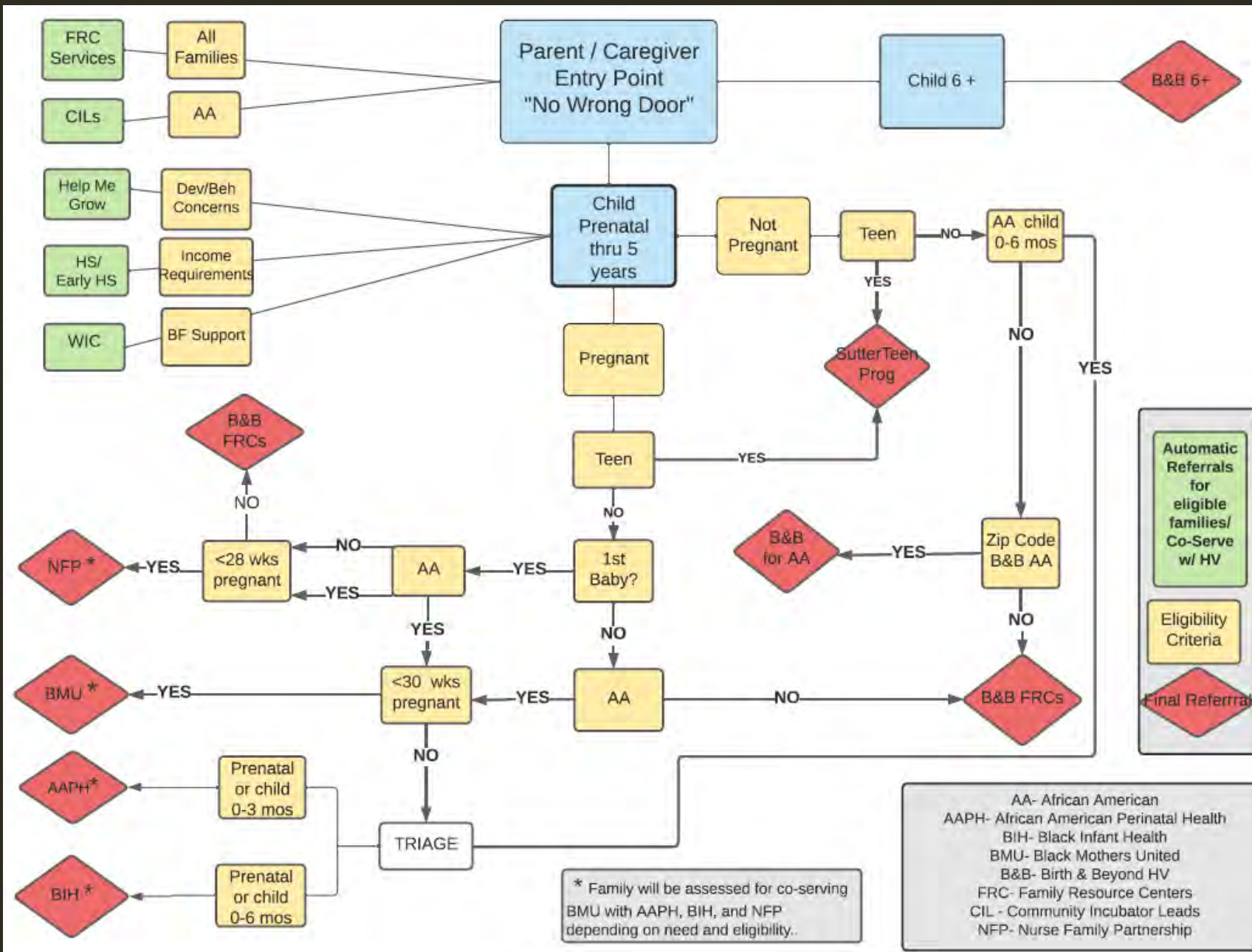
NEXT MEETING:

August 18

## OUR NAME



# HOME VISITING REFERRALS PROGRAM DECISION TREE



## PROGRAMS

### Sutter Teen Program

916-887-4031

### Nurse Family Partnership (NFP)

916-875-0900

### Black Mothers United (BMU)

916-558-4809

### African American Perinatal Health Program (AAPH)

916-875-2229

### Black Infant Health (BIH)

916-875-2229

### B&B BCLC- Arden/Arcade

916-514-8096

### B&B BCLC- Valley Hi/ Meadowview

916-394-6300



## PROGRAMS

### Head Start/ Early Head Start

916-263-3804

### Help Me Grow

916-822-8744

### WIC Lactation Services

916-876-5000/916-326-5841

For a CIL location:

[www.blackchildlegacy.org](http://www.blackchildlegacy.org)

For a B&B FRC Location

[www.birth-beyondfrc.com](http://www.birth-beyondfrc.com)

### Additional Family Resources





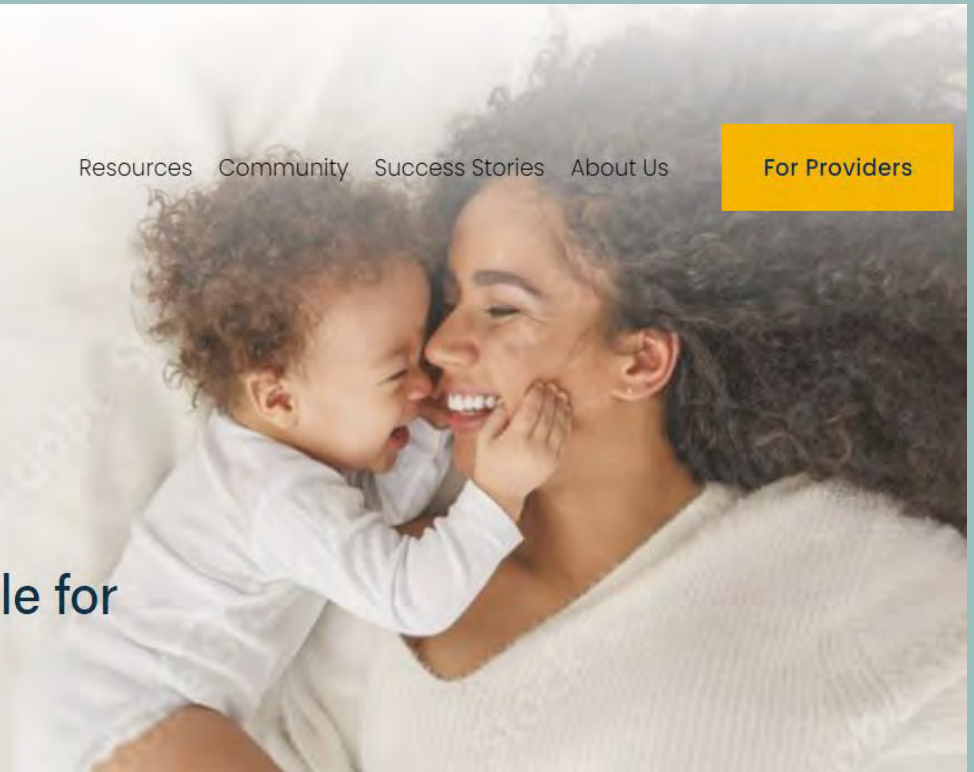
[Resources](#) [Community](#) [Success Stories](#) [About Us](#)

[For Providers](#)

# Pregnant or parenting?

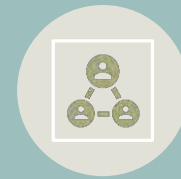
Find out what FREE programs you are eligible for

[Contact Us](#)



## WEBSITE UPDATE

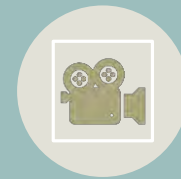




Join the Collaborative!

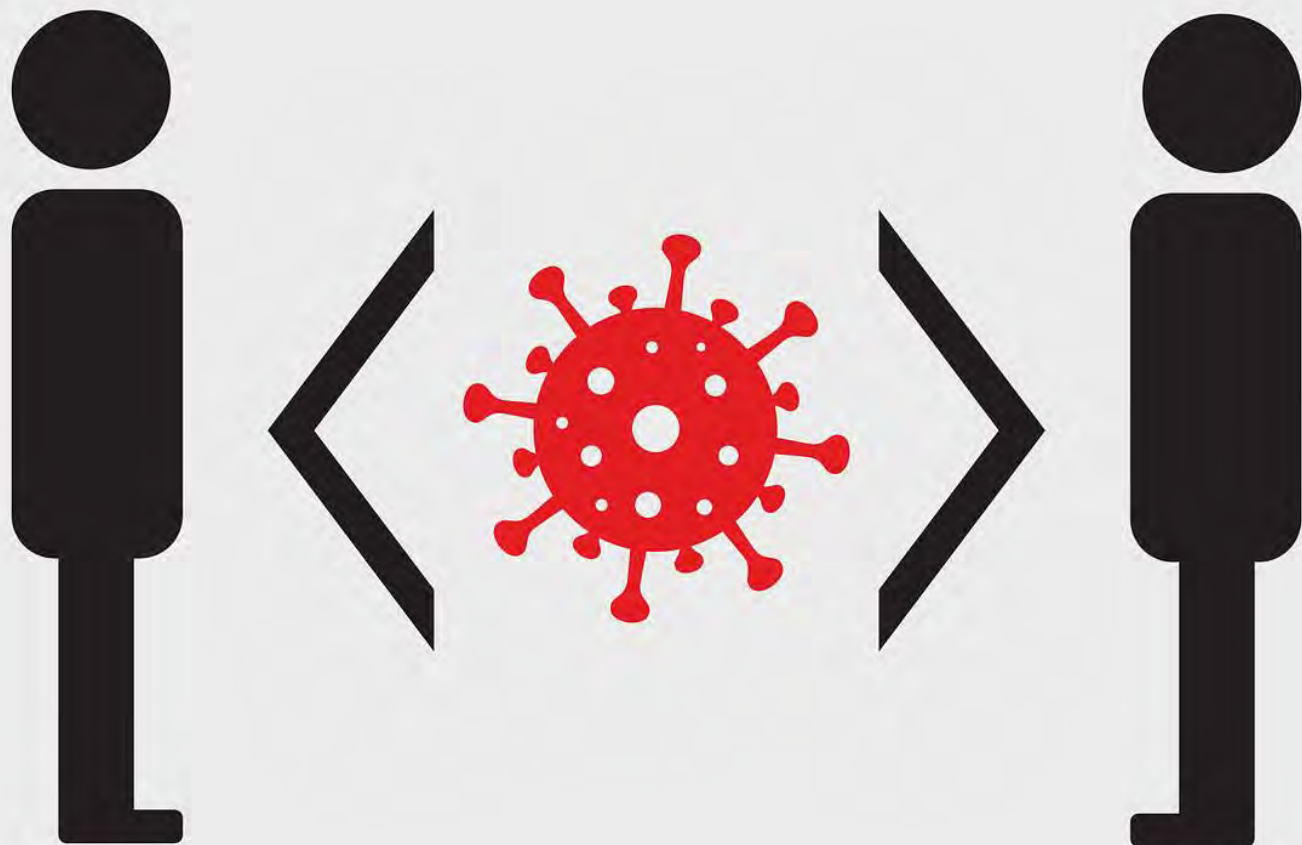


Website



Training Video

# OUTREACH PLAN



# HOW ARE YOU CURRENTLY SERVING PARENTS?

Poll

How is your organization currently providing HOME VISITATION services?

- All are in person
- SOME are in person
- FEW are in person (i.e. crisis)
- NONE (only virtual, drop-off items, etc.)
- N/A

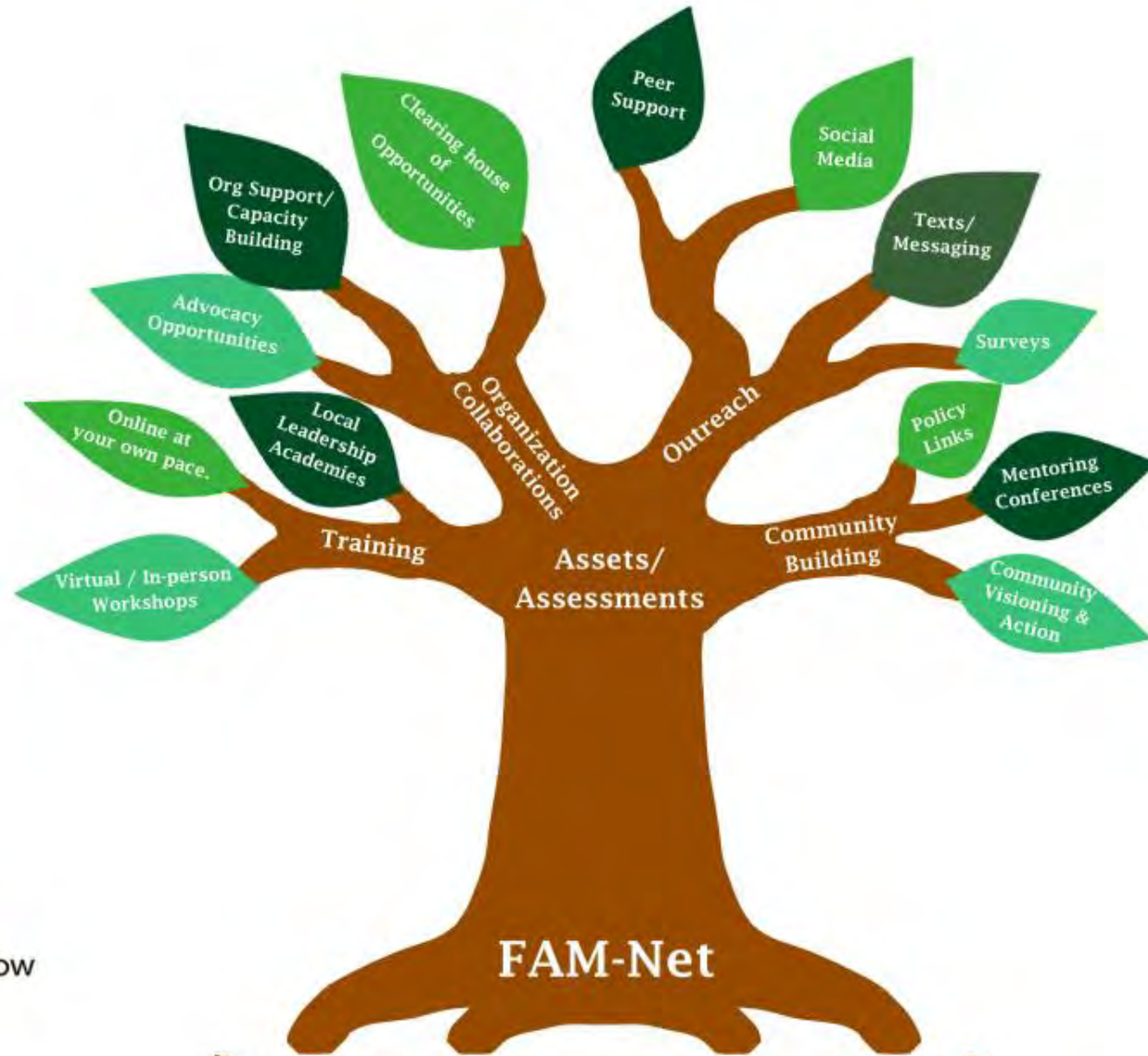
How is your organization currently providing NON HOME VISITATION services?

- All are in person
- SOME are in person
- FEW are in person (i.e. crisis)
- NONE (only virtual, drop-off items, etc.)
- N/A

COMMUNITY  
VOICE

PARENT  
LEADERSHIP  
WORKGROUP  
ACTION PLAN

FAMILY  
ADVOCACY  
MENTORING  
NETWORK





# OUR COMMITMENT TO COMMUNITY

## OPPORTUNITIES

- Stipend Policy and Mini-grant Follow Up
- Website involvement
  - Development/Workgroup
  - Photographers
  - Sacramento families!
- First 5 Strategic Planning

Poll

# PARENT LEADERSHIP TRAINING INSTITUTE

<https://fb.watch/du6nsd0YX/>

## PLTI INITIATIVE STRUCTURE

### THE 4 STAGES OF DEVELOPMENT

What follows shows the four-stage developmental process used by local leaders across the country who have successfully started and sustained PLTI initiatives to change the civic dialogue in their communities.

1

#### PARENT LEADERSHIP LAUNCH

##### YEAR 1

A Civic Design Team organizes and launches the initiative.

- Train parent leaders: 20

2

#### FAMILY CIVICS ON THE RISE

##### YEARS 2-3

Initiate Civic Change projects.

- Train parent leaders: 20–40
- Establish alumni network: 40+

3

#### A GROWING CONSTITUENCY OF PARENTS

##### YEARS 4-5

Integrate alumni into organizations & community change initiatives.

- Train parent leaders: 30–40
- Two-generation leadership

4

#### SUSTAINING CHANGE IN THE COMMUNITY

##### YEARS 5+

Community “go-to” for civic dialog and parent-driven approaches.

- Thriving alumni network: 100+



# PLTI (CONT'D)

## PARENT LEADERSHIP TRAINING INSTITUTE (PLTI) — First Steps

Civic Design Team

Education

Health Plans

Faith Community

Community

Policy

Participant Recruitment

## BREAKOUT ROOM QUESTIONS



Who are we missing in the (CDT)?

What are some strategies to recruit participants?

How can your agency help with that?

## Quick Poll



WHAT DO YOU CONSIDER TO BE THE BIGGEST  
CHALLENGE RIGHT NOW IN YOUR PROGRAM  
THAT YOU COULD USE HELP FROM THE HVCC?

- Hiring qualified staff
- Turnover/ Being short staffed
- Concern for the MH of staff
- Enrolling families in services (outreach)
- Retaining families in services
- Not enough services to meet the needs of the families
- Coordinating services with other community partners (lack of follow-through)
- Impact from COVID
- Other- Put it in the chat!

Poll





IF THE FUNDING WAS AVAILABLE, WHERE WOULD  
YOU INVEST FUNDING (OR INCREASE FUNDING) IN  
YOUR PROGRAM TO IMPROVE OR EXPAND SERVICES  
FOR FAMILIES?

# FAMILY SUPPORT SERVICE WORKERS & MENTAL HEALTH

**ONLINE TRAINING**

## **SELF COMPASSION AND MINDFULNESS** **FOR HOME VISITORS AND FAMILY SUPPORT SERVICE STAFF**

**FRIDAY JUNE 10TH 2022**

**10am-11am**

Shayla Collins is an instructor for the National Alliance for Mental Illness (NAMI) Family 2 Family instructor and has been trained in the Finding Calm curriculum, a mindfulness and self-compassion program.



**SPEAKER**

**SHAYLA COLLINS**

Questions:

Contact Alejandra Labrado at [labradoa@sacounty.gov](mailto:labradoa@sacounty.gov)

**REGISTRATION REQUIRED**



[CLICK HERE TO REGISTER](#)

Shayla Collins

# WE'VE COME A LONG WAY...

## WHAT HAVE WE ACCOMPLISHED?

- Created a Vision
- Brought parents to the table
- Developed a Decision Tree
- Created a Universal Referral Form
- Developed a name and logo
- Learned about new resources for families
- Offered training to staff
- Executed an MOU between 32 agencies!

## WHAT WE STILL NEED TO DO...

- Implement referrals based on Decision Tree:
  - Training Video
  - Utilize Universal Referral Form
  - Launch Sac Family Connect Website
  - Training on making referrals
  - Promote Sac Family Connect
- Continue to build relationships (Meet & Greets, Discussion topics)
- Data Sharing!



## NEXT MEETING

- “Unveil” Training Video
- Develop outreach plan for Sac Family Connect
- Discussion Topics
  - Challenges
  - Strategic Planning
- Recruiting parents for PLTI
- Meet & Greet

**2022  
QUARTERLY  
MEETINGS**

THURSDAY AUGUST 18<sup>TH</sup>  
THURSDAY NOVEMBER 17<sup>TH</sup>

9:30-11AM (VIRTUAL)

**Questions?**

Alejandra Labrado  
[labradoa@saccounty.gov](mailto:labradoa@saccounty.gov)

