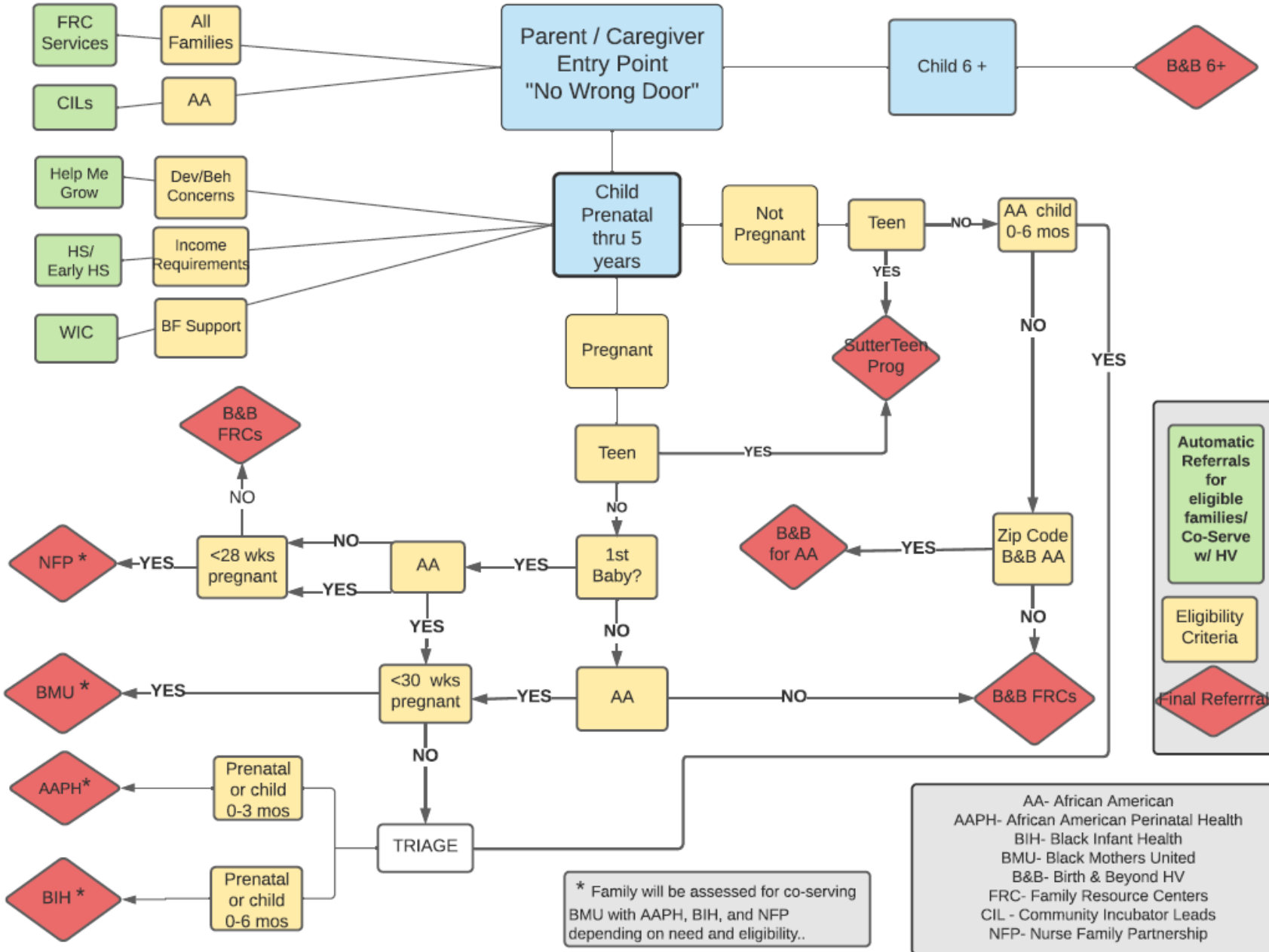


Home Visiting Referrals Program Decision Tree

Updated April 2022



PROGRAMS

- [Sutter Teen Program](#)
916-887-4031
 - [Nurse Family Partnership \(NFP\)](#)
916-875-0900
 - [Black Mothers United \(BMU\)](#)
916-558-4809
 - [African American Perinatal Health Program \(AAPH\)](#)
916-875-2229
 - [Black Infant Health \(BIH\)](#)
916-875-2229
 - [B&B BCLC- Arden/Arcade](#)
916-514-8096
 - [B&B BCLC- Valley Hi/ Meadowview](#)
916-394-6300
 - [Head Start/ Early Head Start](#)
916-263-3804
 - [Help Me Grow](#)
916-822-8744
 - [WIC Lactation Services](#)
916-876-5000/916-326-5841
- For a CIL location:
www.blackchildlegacy.org
- For a B&B FRC Location
www.birth-beyondfrc.com
[Additional Family Resources](#)